

# LEONARDO

THE FUSION OF AESTHETICS AND SCIENTIFIC INNOVATION IN DENTAL TRAINING

---

ZEISING GERMANY GmbH  
Preuschwiesen 1  
91227 Leinburg  
Germany



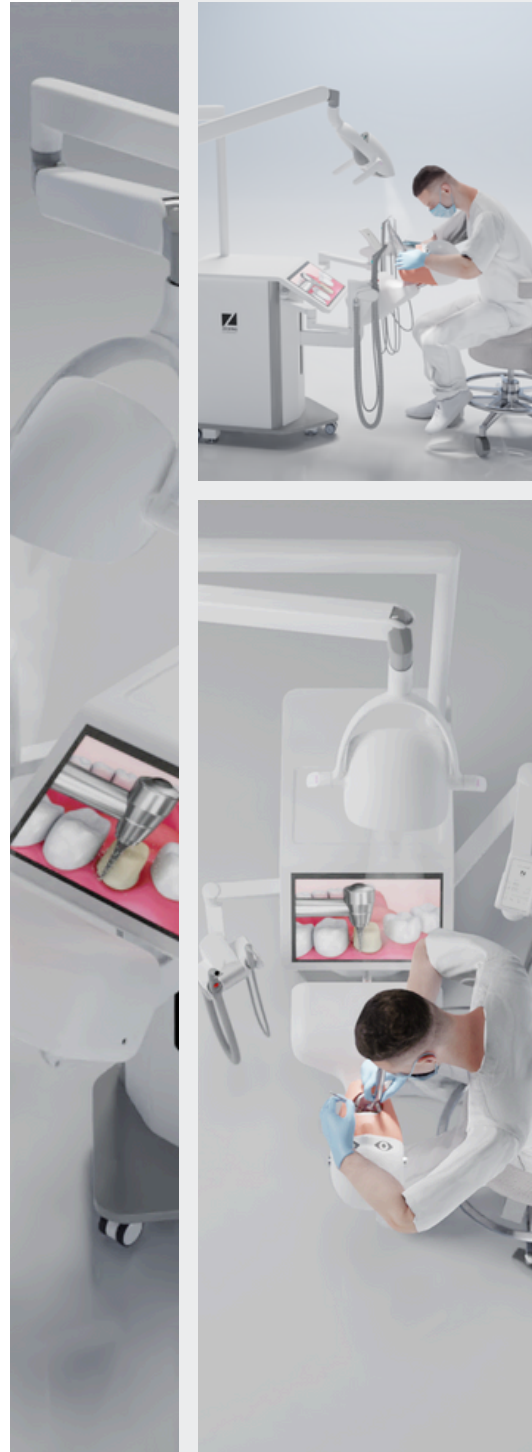
# DENTAL SIMULATION UNIT

## REVOLUTIONIZE YOUR DENTAL TRAINING

LEONARDO is a completely new development with high-quality components that have been tried and tested over many years. The torso, head and the models are made by Frasaco Germany. Any other head- and model systems are available on request. The teacher can share a live camera signal from a LEONARDO Simulation unit of his/her choice to another LEONARDO Simulation Unit selected by him/her, or to a group of LEONARDO Simulation Units selected by him/her, or to all LEONARDO Simulation Units.

Imagine teaching your students more efficiently and effectively.

Choose from 3 Leonardo basic models to adapt to individual budget frameworks and requirements.



# DENTAL SIMULATION UNIT

## Variations

### STARTER LEVEL



### ADVANCED LEVEL



Manually inclination of torso.

### PREMIUM LEVEL



Patented electrically crush-free inclination of the torso.

# DENTAL SIMULATION UNIT

## Variations

LEONARDO SIMULATION UNITS - Overview of standards and options. June 2024	Starter Level	Advanced Level	Premium Level
Separate Dentist and Assistant swivelling aluminium arm set, 100% rustproof	X	x	x
High volume and saliva ejector unit with integrated filter at assistant arm	X	X	X
Dentist element with 4 holders	X	X	X
Standard intraoral camera Full HD without image editing software		X	
Premium intraoral camera with image editing software			X
Air lifting system of complete unit for precise fixation			X
Optional LED curing light with additional holder		X	X
Treatment light color temperature 5,000 Kelvin with gesture control. Swivelling arm with vertical post, attached to the simulation unit	X	X	X
Optional to be connected to bidirectional Video and Audio system EDE GUIDE		X	X
Optional BienAir Optima INT MCX micro motor control pad with powder coated holder	X	X	X
2 turbine hoses for LED light air turbine Borden	X	X	
1 LED air turbine hose, 1 LED micro motor hose			X
Optional integrated Venturi wet suction	X	X	X
To be connected to central wet suction system as standard solution	X	X	X
Electrical height adjustment of torso	X	X	X
Manual inclination of torso	X	X	
Electrical inclination of torso			X
Optional Nissin Head instead of Frasaco head	X	X	X
Frasaco torso PT K	X	X	X
Frasaco model set AG-3 articul.maxilla and mandible (32 teeth with gnathological anatomy) execution in hard frasaco plastic elastic removable gingivae	X	X	X
Frasaco face mask P-6	X	X	X
Optional any other Frasaco model sets	X	X	X
15,6" Full HD touchscreen, integrated to bended solid plastic table top		X	X
Pneumatic foot control	X	X	X
Optional integrated computer unit to be connected to onsite intranet		X	X
Powder coated aluminium housing 100% rustproof	X	X	X
Table top made of massive plastic with recessed level to store instruments and materials. 100% waterproof	X	X	X
Optional 2 fresh- and waste water bottles	X	X	X
Base plate made of solide plastic, 100% waterproof	X	X	X
Optional EDU GUIDE Software package		X	X

Standards and options for your individual configuration or future upgrades.  
For any other setups just get in contact with us.

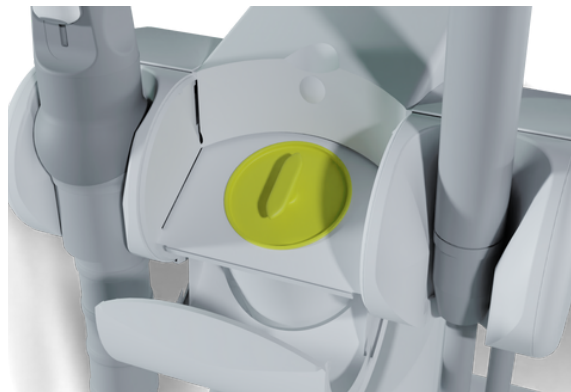
# DENTAL SIMULATION UNIT

With Leonardo, your students experience an immersive training, as if they were treating a patient at the dentist chair.



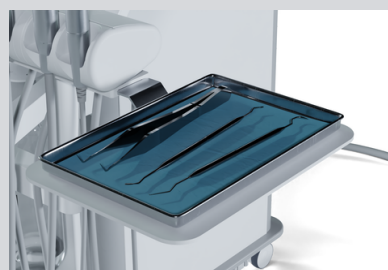
All LEONARDO models, Starter, Advanced and Premium come with **dentist** and **assistant arm**.

## Assistant arm



There is a centrally integrated removable filter element on the assistant arm.

## Dentist arm



Horizontally pivotable instrument tray on the dentist arm.

Optional: Integrated BienAir Optima INT MCX micro motor control panel offers 3 different programable settings for speed and torque

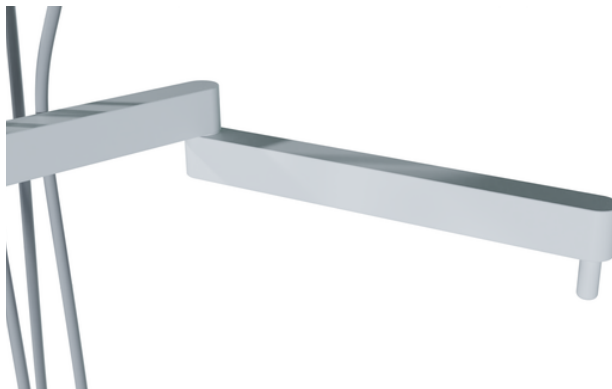


# DENTAL SIMULATION UNIT

They can be exchanged easily and fast from left to right side, for right- or left-hand usage.



Robust solid metal arms with powder-coated surface and precise joints.



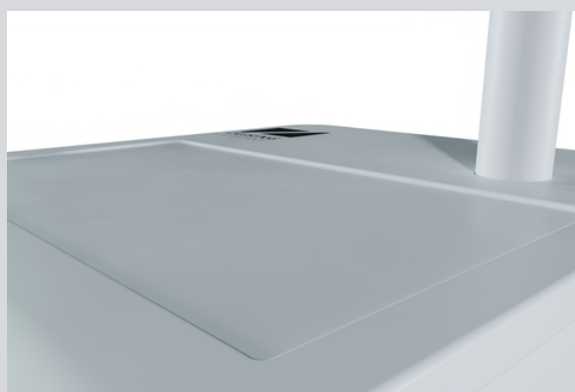
Exchangeable without using any tools.

# DENTAL SIMULATION UNIT



Extremely durable, solid and bended plastic panel. 100% water resistant and shockproof.

Solid base plate, 100% water resistant and shockproof. Air lifting system.



Milled instrument tray with rounded endings for thorough and easy cleaning.

# DENTAL SIMULATION UNIT

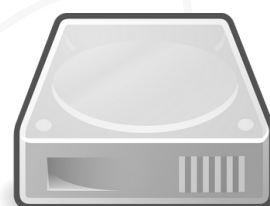


Advanced and Premium Level are coming with an own integrated Full HD Touchscreen, both with an intra oral camera for bidirectional video and audio broadcasting. This allows students to present their work to the teacher at any time and discuss it with him. The ergonomic positioning of the Full HD touchscreen allows students to quickly switch their gaze between the oral cavity and the monitor, e.g. to compare their work with an instructional video.

At any time, the student can show the teacher his work in the oral cavity of his simulator in Full HD resolution in a quick and easy way, and can effectively exchange information with him about even the smallest details.

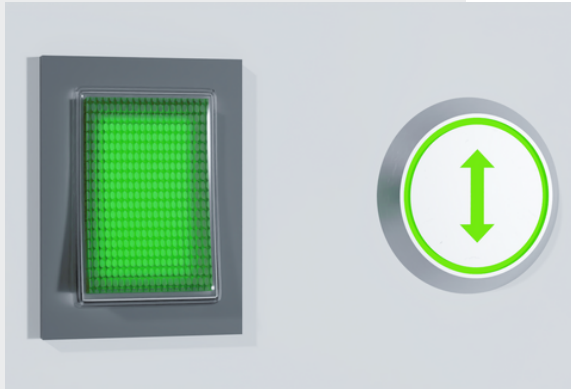


This opens up future-oriented training opportunities. In this way, results of the student's work can be saved on an optional computer hard disk. Thus, creating a valuable library over the years, which will ensure practical and effective digital support for their training in the coming semesters. The teacher can work interactively with his students digitally.

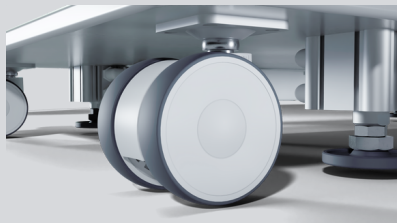


# DENTAL SIMULATION UNIT

Main switch for electricity and opening the integrated air pressure valve.



When the round switch is pressed, the 4 integrated compressed air cylinders under the base plate automatically extend and thus fix the entire unit on hard rubber feet.



High-quality and durable castors .

Operating light with gesture control and swiveling arm.



With the multifunctional foot switch, the torso is moved up and down vertically. In the premium level version, this also includes the inclination between vertical and horizontal position. 2 foot pedals also control the micro motors/air turbines, optionally with water.

Optional fresh- and waste water bottles.





# CONTACT

ZEISING GERMANY GmbH  
Preuschlwiesen 1  
91227 Leinburg

T. +49 (0)9120 / 18 27 27

[contact@zeising.info](mailto:contact@zeising.info)  
[www.zeising.info](http://www.zeising.info)



# LEONARDO

---

BETTER COMPREHENSION – GREATER AND FASTER LEARNING SUCCESS.

ZEISING GERMANY GmbH  
Preuschwiesen 1  
91227 Leinburg  
Germany

